

L-FLEX

**Straight and cylindrical flexible tube
Absorbs deflection that is
generated by earthquake or
uneven cave-in**



Feature

- Extremely simple structure without an arched structure
- The internal steel wire inserted in a spiral form creates high pressure resistance and the ability to retain the cross-sectional area.

Usage

- Pipes for tap water and sewer
- Pipes in sewage treatment plants
- Pipes in pump stations
- Factories in general

Kind

- For 100mm eccentricity (Ground & Under-ground)
- For 200mm eccentricity (Ground & Under-ground)

Standard issue

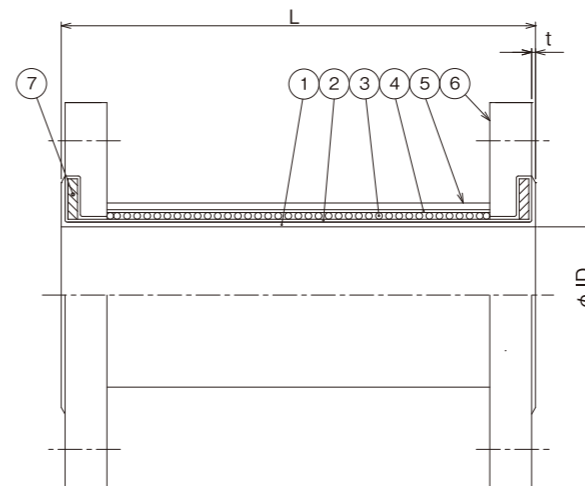
- Max. operating pressure : Please see the maximum operating pressure in the chart on the right. Please contact us when using this product under the pressure that exceeds the maximum operating pressure (1.0 MPa) for individual examination of the structure.
- Max. operating temperature : $-10^{\circ}\text{C} \sim 60^{\circ}\text{C}$
- When applying for under-ground use, please install the joint in depth of 1M ~ 3M. Maximum Car weight is 25 Ton.
- Please contact us if gas is flowing through the pipe because the highest operating pressure becomes different.
- Please use a model with a control unit (tie rod bolt type) to regulate the thrust in the axial direction that is generated by the internal pressure and to prevent excessive deflection. Also, please use a model with a control unit (set bolt type) to adjust the face-to-face dimension during installation. (Please see P25.)

- This product cannot be used in areas with repeated and frequent pressure changes, such as the delivery side of pressurizing or pressure boosting water pumps.
- This product cannot be used with fluids or areas of installation that might lower the elasticity of rubber. Please contact us because use of this product in such conditions needs to be examined.

Handling instructions

- This product generates reactive force due to the load of the inner pressure. Thus, fixing points or supports are required for installed pipes. (Please see p. 26-28.)
- Please see p. 26-28 for other cautions.

Structure



No.	Name	Material
1	Inner rubber	Synthetic rubber
2	Reinforcement layer	Synthetic fiber
3	Reinforcement wire	Steel wire
4	Reinforcement layer	Synthetic fiber
5	Outer rubber	Synthetic rubber
6	Flange	SS400, SUS304 etc.
7	End-ring	SS400 etc.

Please see "Rubber selection guide" in p.25 for selecting the material of inner rubber.

- The standard product uses the JIS10K flange. Flanges with other specification, such as JIS5K, JIS20K, tap water, JPI, ANSI can also be used.
- Besides the standard products SS400 and SUS304, acceptable materials of the flange include SUS316, SUS316L and S25C.
- Hot-dip galvanization (Zn plating) is the standard for SS400 flange to be used above the ground, and paint consisting of black epoxy resin for underground installation. Painted materials are also available.

Size

NB	φID [mm]	L [mm] producible length	For 100mm eccentricity			For 200mm eccentricity			Max. operating pressure		
			L [mm]	expansion [mm]	contraction [mm]	L [mm]	expansion [mm]	contraction [mm]	inner pressure [Mpa]	vacuum pressure [kPa] ground under-ground	
15A	20	200~1200	350	25	15	450	35	20	1.0	-90	-90
20A	20	200~1200	350	25	15	450	35	20	1.0	-90	-90
25A	25	200~1200	350	25	15	450	35	20	1.0	-90	-90
32A	32	200~1200	350	25	15	450	35	20	1.0	-90	-90
40A	40	200~1200	350	25	15	450	35	20	1.0	-90	-90
50A	50	200~1200	350	25	15	450	35	20	1.0	-90	-90
65A	62	200~1200	350	25	15	450	35	20	1.0	-90	-90
80A	75	200~1200	350	25	35	450	35	45	1.0	-90	-90
100A	100	200~1200	350	25	35	450	35	45	1.0	-90	-90
125A	126	200~1200	400	30	40	500	40	50	1.0	-90	-90
150A	151	200~1200	500	40	50	600	45	60	1.0	-90	-60
200A	202	200~1200	500	40	50	600	45	60	1.0	-90	-50
250A	254	200~1200	500	40	50	700	55	70	1.0	-70	-20
300A	305	200~1200	500	40	50	700	55	70	1.0	-70	-20

- Please contact us for details of individual deflection when using diagonal pipes, since they differ from the above values.
- Please make sure that deflections remain within permissible range during operation.
- The deflections in the chart indicate independent deflections. Corrections are required when there are multiple deflections. Please see p. 26 for the method of correcting deflections.

**Besides the sizes in the chart above, L-FLEX can be produced from 350A to 600A.
Please contact us for detail.**